



Stainsby Road, London, E14

BUTLER & STAG



Set within this striking, modern apartment complex is this two bedroom duplex apartment. Arranged over the third and fourth floor the apartment offers 829sqft/79m2 of accommodation, hard wood floors running continuously throughout the property and glorious views overlooking the green spaces of Bartlett Park and Canary Wharf.



- Secure Apartment Complex
- Views of Canary Wharf
- Balcony
- Duplex Apartment
- Modern Interiors
- Close to DLR



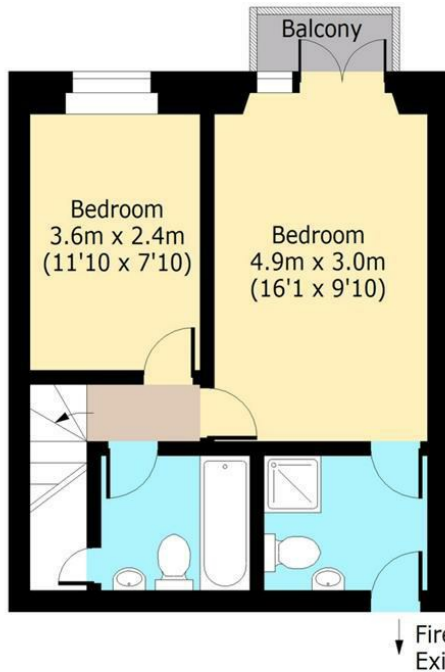


Stainsby Road, E14



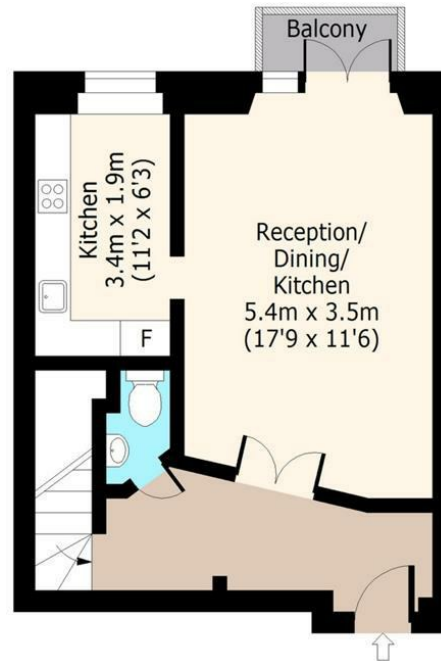
Third Floor

Approx. 38 Sq. meters (409 Sq. feet)



Fourth Floor

Approx. 39 Sq. meters (420 Sq. feet)



Total area: approx. 77 Sq. meters (829 Sq. feet)
For illustration purposes only - not to scale
www.jpaplus.com

IMPORTANT NOTICE - These particulars have been prepared in good faith and they are not intended to constitute part of an offer or contract. We have not performed a structural survey on this property and the services, appliances and specific fittings have not been tested. All photographs, measurements, floor plans and distances referred to are given as a guide and should not be relied upon.

BUTLER & STAG

☎ 020 8102 1236

🏠 508 Roman Road, Bow, London, E3 5LU

✉ bow@butlerandstag.com

www.butlerandstag.uk